

Push and Pull Setup Tables

May 13, 2011

The **Push and Pull Setup Tables** form can be used to mass push and pull data in tables from the district or a school to select or all schools. For example, the Calendar (DAY table) can be created in one school and pushed to all schools by using this form.

The data must first be added to a district or a school before using this form.

For Client Server users the **Push and Pull Setup Tables** form is available in Admin CS. For Access districts the form is available in the District database. From **View all Forms**, click the mouse on the **Push and Pull Setup Tables** form and the following form will display.



2011-2012 Eagle Unified School District 5/13/2011

Select table to Push/Pull

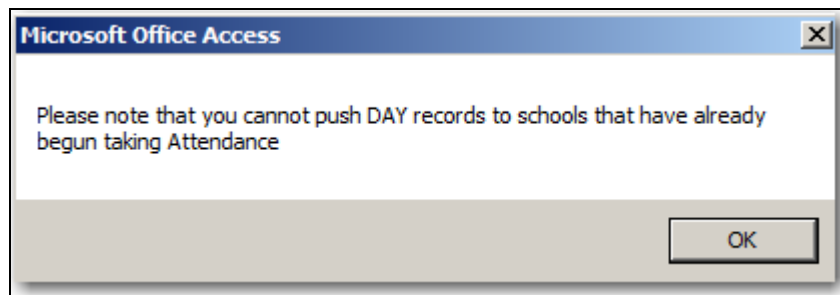
School(s) to Pull From			School(s) to Push To				
	RcdCnt	Pull		RcdCnt	Push		
000	Eagle Unified School District	0	No	000	Eagle Unified School District	0	No
990	Golden Eagle Elementary School	0	No	990	Golden Eagle Elementary School	0	No
992	Hawk Elementary for ATT	0	No	992	Hawk Elementary for ATT	0	No
994	Screaming Eagle High School	0	No	994	Screaming Eagle High School	0	No
995	Aeries Continuation School	0	No	995	Aeries Continuation School	0	No

Click on the **Select Table to Push/Pull** dropdown on the left side of the form. The following tables will display.

School(s) to Push To	RcdCnt	Push
000 Eagle Unified School District	0	No
990 Golden Eagle Elementary School	0	No
992 Hawk Elementary for ATT	0	No
994 Screaming Eagle High School	0	No
995 Aeries Continuation School	0	No

The vertical scroll bar can be used to scroll down to see all the tables available to Push/Pull. Click the mouse on a table to select it.

If the DAY table is selected the following warning message will display.



Click the mouse on **OK** to continue. The form will display a list of schools and the Record Count for the selected table. The example below shows that school Golden Eagle Elementary school has 200 records in the **DAY** table and the other schools have 0 records.

School(s) to Pull From	RcdCnt	Pull	School(s) to Push To	RcdCnt	Push
000 Eagle Unified School District	0	No	000 Eagle Unified School District	0	No
990 Golden Eagle Elementary School	200	No	990 Golden Eagle Elementary School	200	No
992 Hawk Elementary for ATT	0	No	992 Hawk Elementary for ATT	0	No
994 Screaming Eagle High School	0	No	994 Screaming Eagle High School	0	No
995 Aeries Continuation School	0	No	995 Aeries Continuation School	0	No

To push the records from Golden Eagle Elementary to other schools and the district, click the mouse on the school on the left side of the form to select it under **School(s) to Pull From**. The **Pull** column will change from No to Yes and the school will now not display on the right side of the form, **School(s) to Push To**.

2011-2012 **Eagle Unified School District** **5/13/2011**

Select table to Push/Pull
DAY

All None

School(s) to Pull From			RcdCnt	Pull	School(s) to Push To			RcdCnt	Push
000	Eagle Unified School District		0	No	000	Eagle Unified School District	0	No	
990	Golden Eagle Elementary School		200	Yes	992	Hawk Elementary for ATT	0	No	
992	Hawk Elementary for ATT		0	No	994	Screaming Eagle High School	0	No	
994	Screaming Eagle High School		0	No	995	Aeries Continuation School	0	No	
995	Aeries Continuation School		0	No					

Click on the school on the right side of the form that you want to push the DAY table records to. The **Push** column will change from No to Yes as the schools are selected.

The **All** or **None** buttons can be used to select schools also. Below is the form after All schools are selected.

2011-2012 **Eagle Unified School District** **5/13/2011**

Select table to Push/Pull
DAY

Please note - any existing DAY records in the Schools selected to Push To will be DELETED!

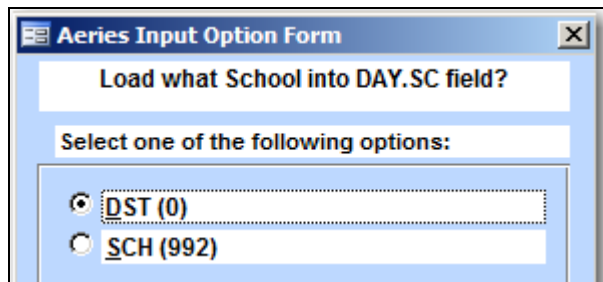
All None

School(s) to Pull From			RcdCnt	Pull	School(s) to Push To			RcdCnt	Push
000	Eagle Unified School District		0	No	000	Eagle Unified School District	0	Yes	
990	Golden Eagle Elementary School		200	Yes	992	Hawk Elementary for ATT	0	Yes	
992	Hawk Elementary for ATT		0	No	994	Screaming Eagle High School	0	Yes	
994	Screaming Eagle High School		0	No	995	Aeries Continuation School	0	Yes	
995	Aeries Continuation School		0	No					

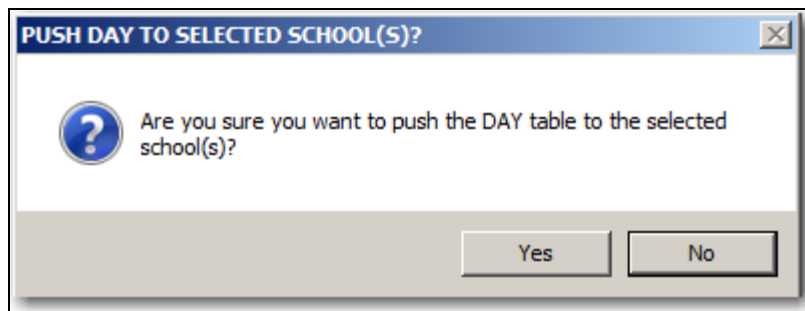
Click the mouse on the **Push Table to Selected School(s)** button on the bottom of the form after selecting schools.

Push Table to Selected School(s) Exit

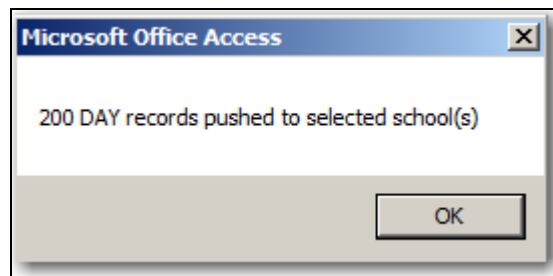
The following message will display in Access databases when pushing school tables to the district database. The records can be pushed to the District database with the SC field as 0 or the school code. Select the appropriate option and click the mouse on **OK**.



The following message will display.



Click the mouse on **Yes** to continue or **No** to cancel the process. A message will display when the process is complete.



If there are records already existing in a table for school that you will be pushing to, the following message will display. All the existing records in the table will be deleted and replaced with the records from the selected school to Push from.

