



Aeries Student Information System
Aeries and Access 2007
December 8, 2008

Requirements for Using Office/Access 2007 and AERIES

In order for Aeries to operate properly under Access 2007 there are certain system configurations that must be set prior to running Aeries. If these prerequisites are not met, Aeries will not be able to update to a new version and will be stuck on the version from the installation package.

Prerequisites:

1. The installation of the Microsoft .NET 2.0 Framework
2. The installation option in the Office 2007 setup to include:
“.NET Programmability Support”

On the following pages you will find instructions on achieving steps 1 and 2.

Installing the .NET 2.0 Framework

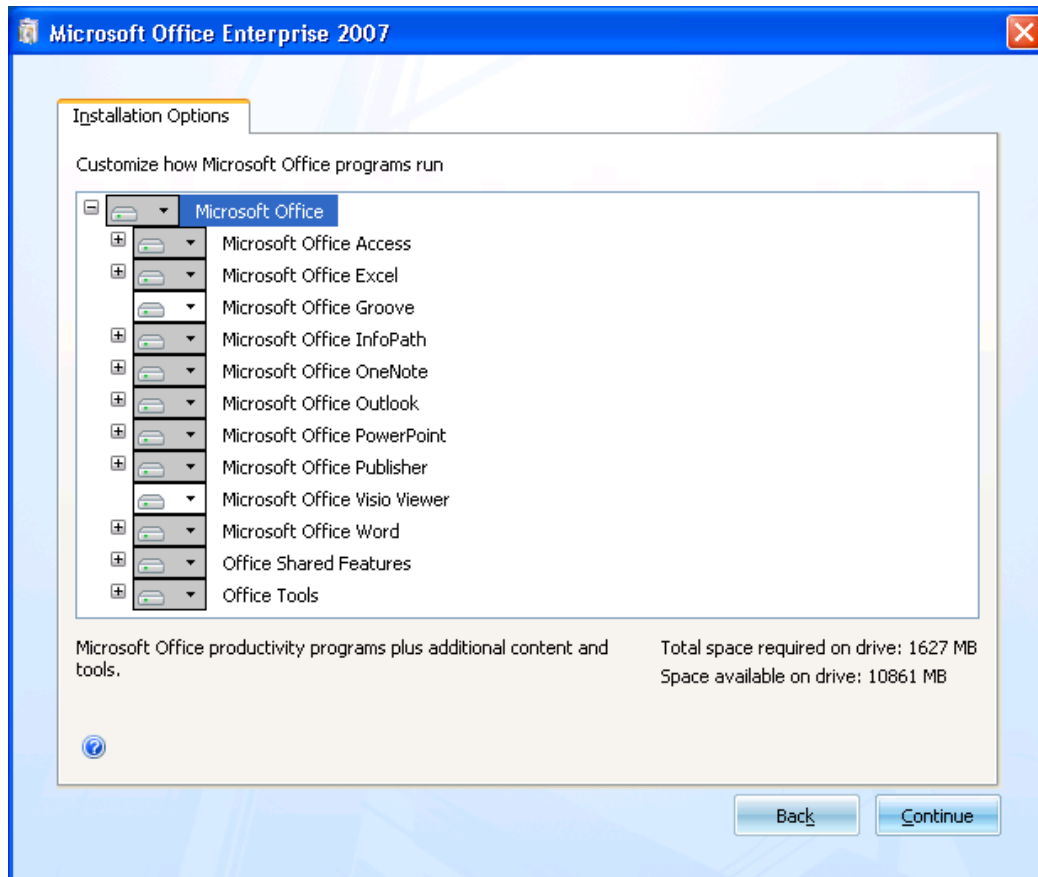
If the workstation does not already have the Microsoft .NET 2.0 Framework, the installer can be found online at Microsoft's web site at the following link:

<http://www.microsoft.com/downloads/details.aspx?FamilyID=0856EACB-4362-4B0D-8EDD-AAB15C5E04F5&displaylang=en>.

Many workstations come with .NET preloaded, but they may be an earlier version. The second requirement requires workstations with Office installations to make sure a specific selection is made during the install process.

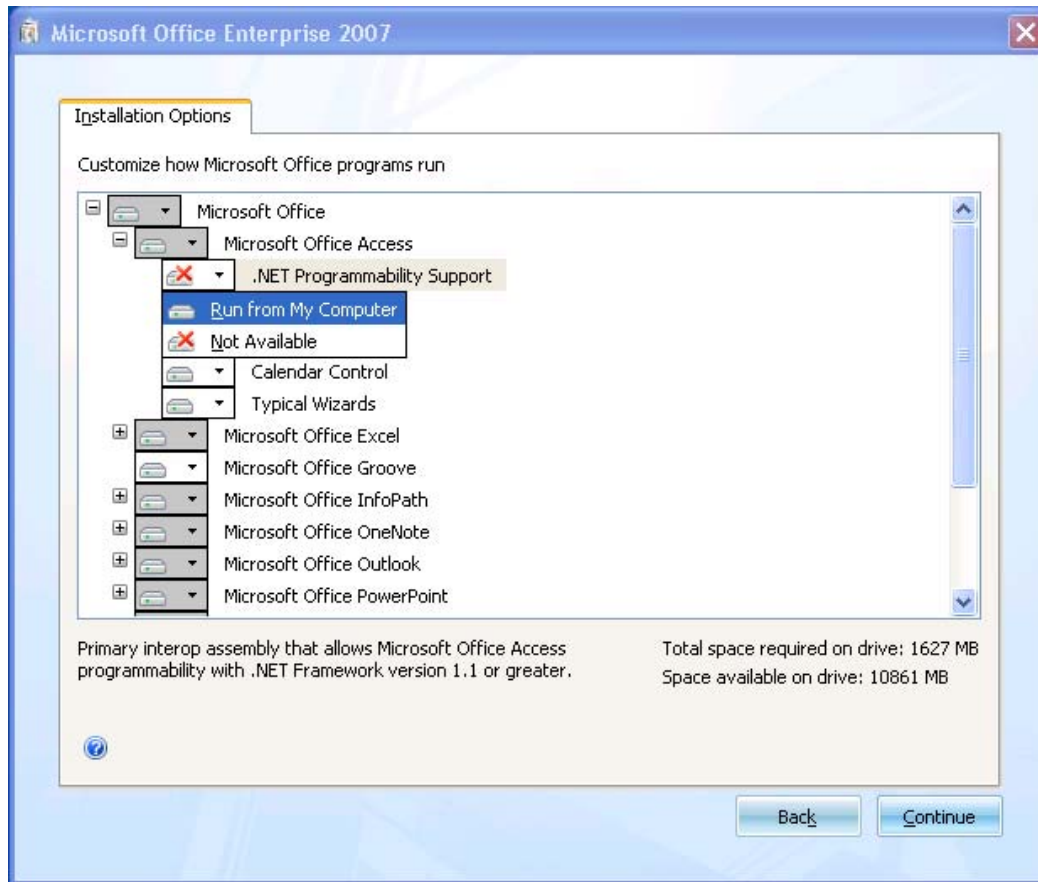
Include “.NET Programmability Support” in Office 2007 Setup

If you have a workstation that already has Office 2007 loaded, you can choose to add this feature afterwards by running the Office 2007 setup, selecting “Add or Remove Features” and following the same steps outlined in the images below:



After you have typed in your CD Key and designated where Office will be installed, you are given the option to customize the installation. Like the image above, there will be a list of features and programs.

Expand the Microsoft Office Access selection:



By default, the “.NET Programmability Support” option is not selected to be installed. Left click on the text and select “Run from My Computer” followed by the “Continue” button at the bottom right hand corner. This will install the necessary files required by AERIES to use the auto-update feature in Office 2007.

When both of the above prerequisites are loaded, the auto-update process will perform as intended, and as seen on any workstation with AERIES and Office 2003 or prior.